

PART OF S.W. 1/4
SECTION 20, T.6N., R.1W., S.L.B. & M.

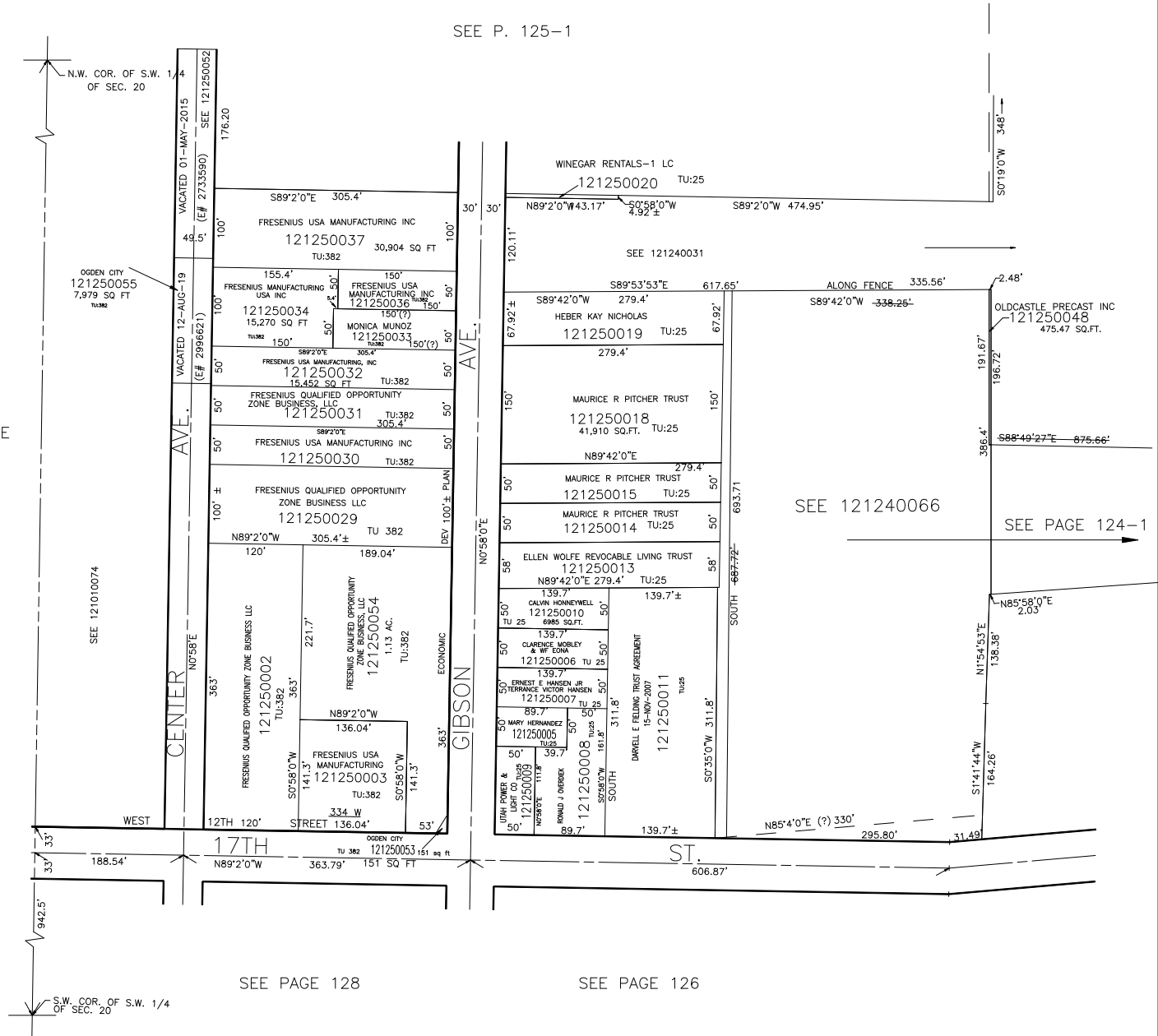
IN OGDEN CITY

SCALE 1" = 100'

TAXING UNIT: 25,382

SEE P. 125-1

SEE PAGE 101



SEE PAGE 101

SEE PAGE 128

SEE PAGE 126

SEE PAGE 124-1